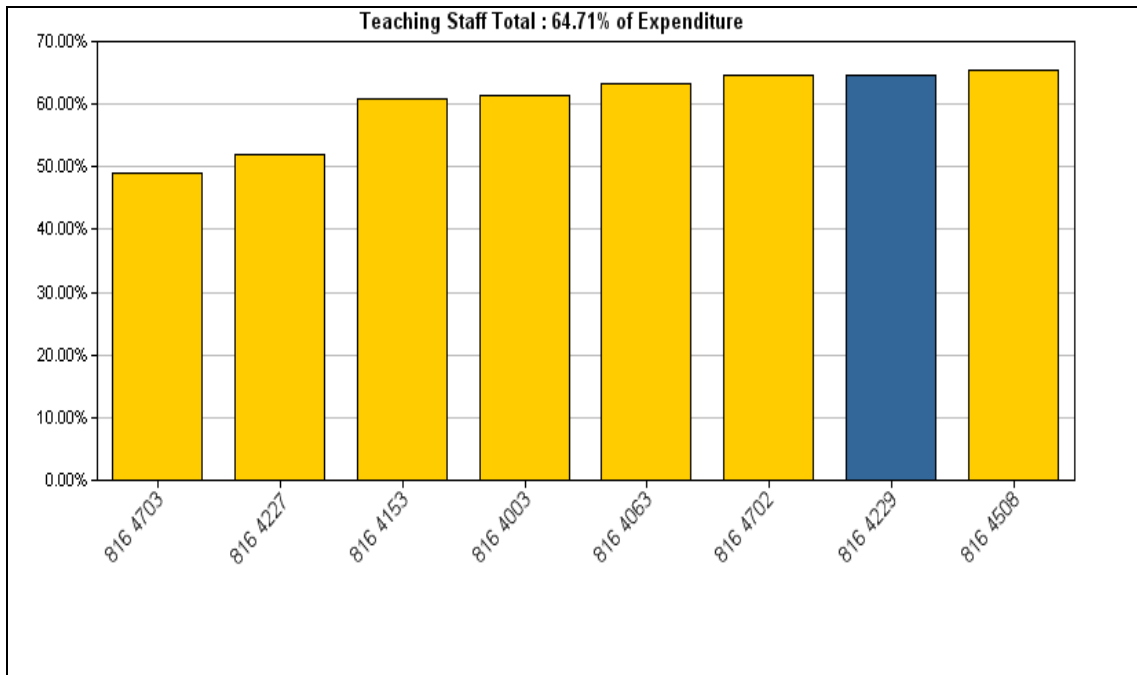


CFR Benchmarking

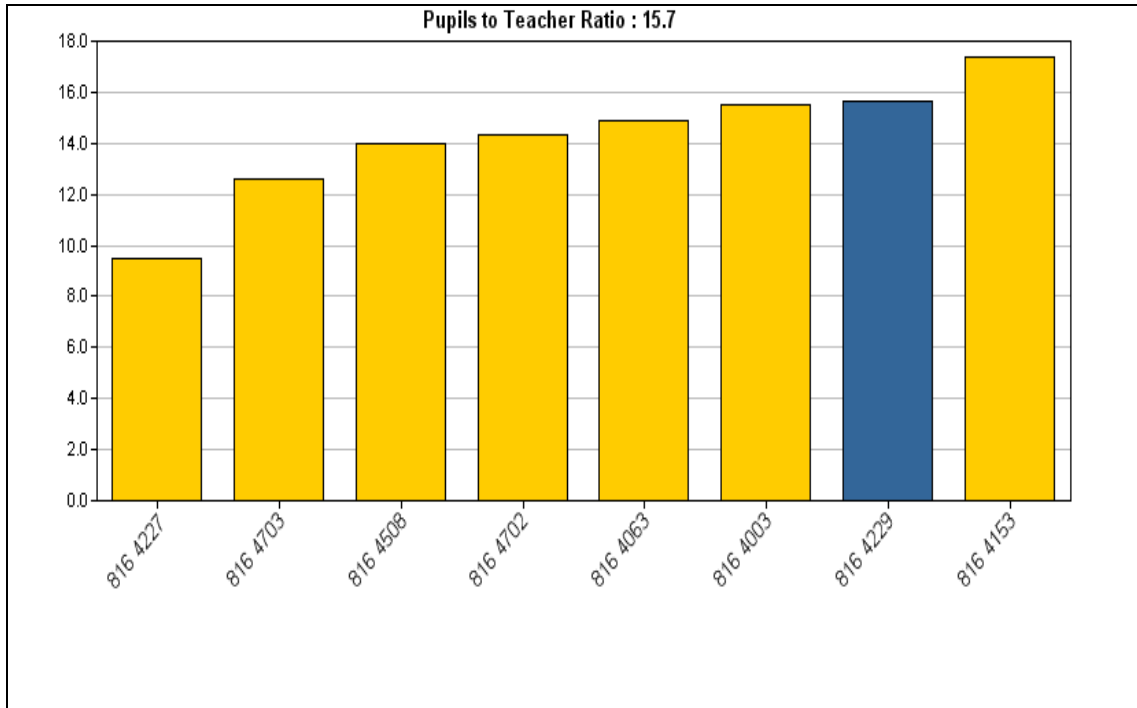
Benchmarking has been carried out comparing Millthorpe against the other York schools using the 2011-12 CFR data. The two academy schools, Manor and Archbishop Holgates, are not required to provide this data and are therefore not included. Millthorpe is shown by the blue bar and for identification purposes the other schools are:

| | |
|------|-----------------|
| 4003 | Canon Lee |
| 4063 | Huntington |
| 4153 | Fulford |
| 4227 | Burnholme |
| 4508 | Joseph Rowntree |
| 4702 | All Saints |
| 4703 | York High |

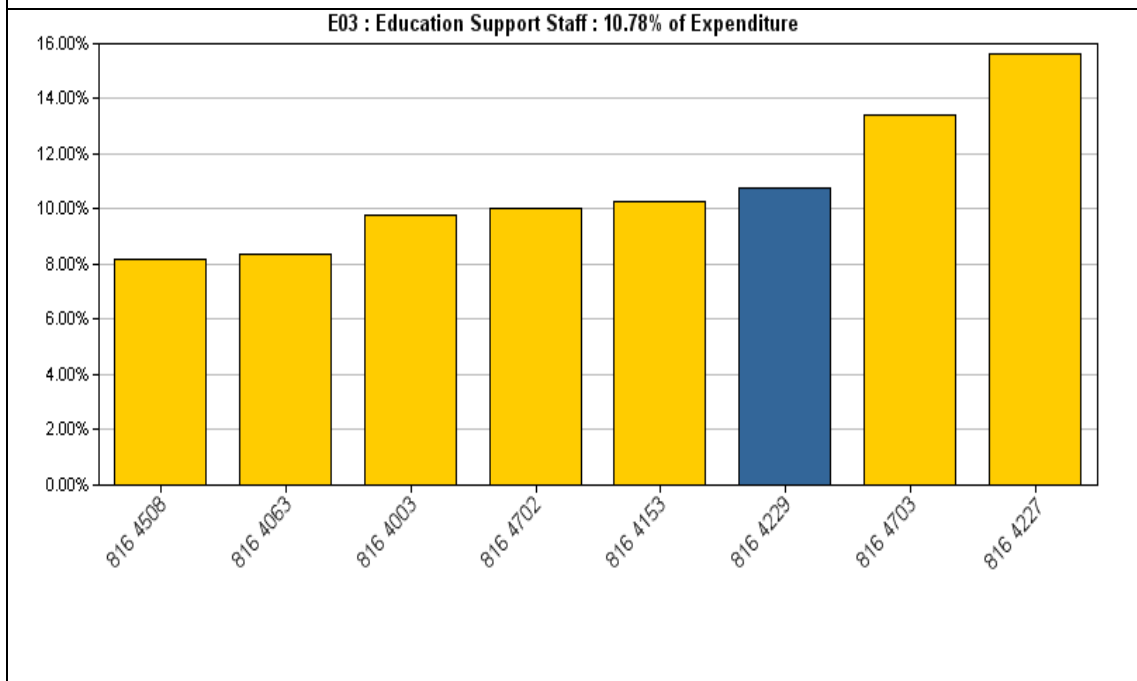


This graph shows that 64.71% of Millthorpes total expenditure was on teaching staff and that this is the second highest amongst the York schools.

Millthorpe School

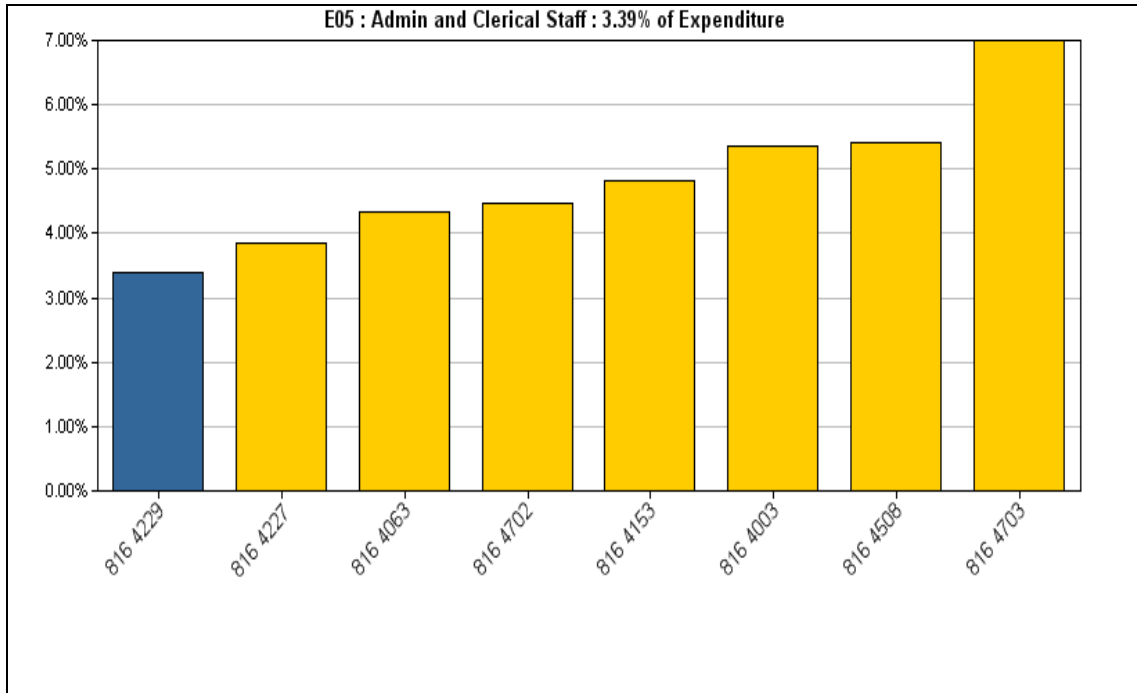


This shows that the pupil to teacher ratio was 15.7 and is second only to Fulford. Burnholme is at approx 9.5.

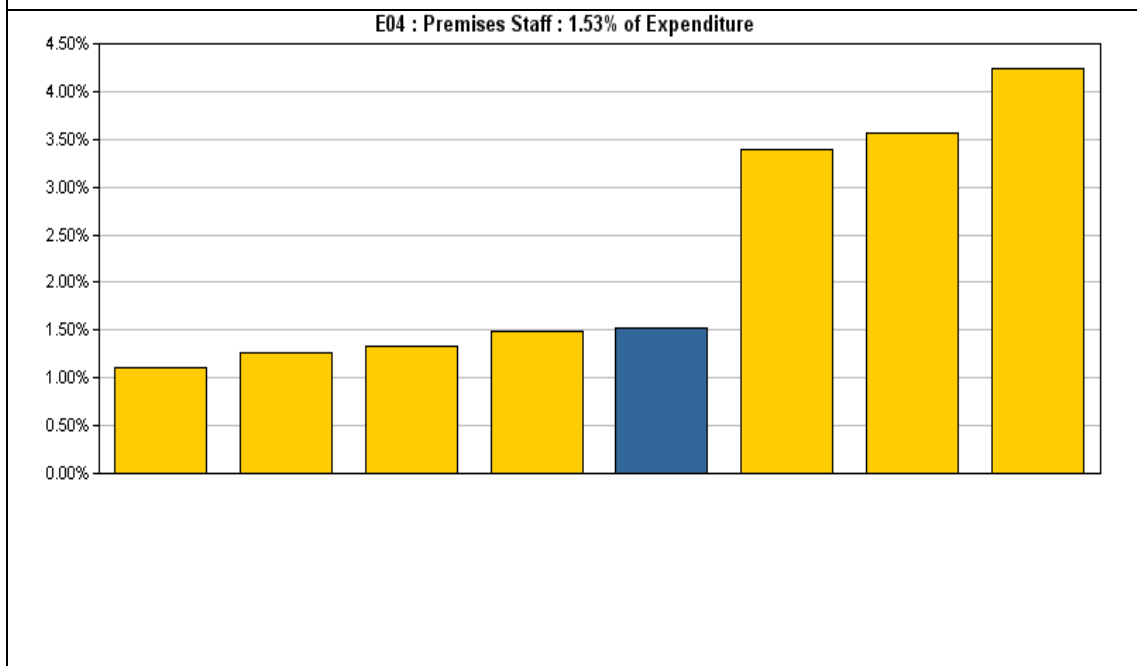


This shows that Education support staff, (ie TA's, Student Support Officers, Technicians and Cover Supervisors) account for 10.78% of total expenditure.

Millthorpe School

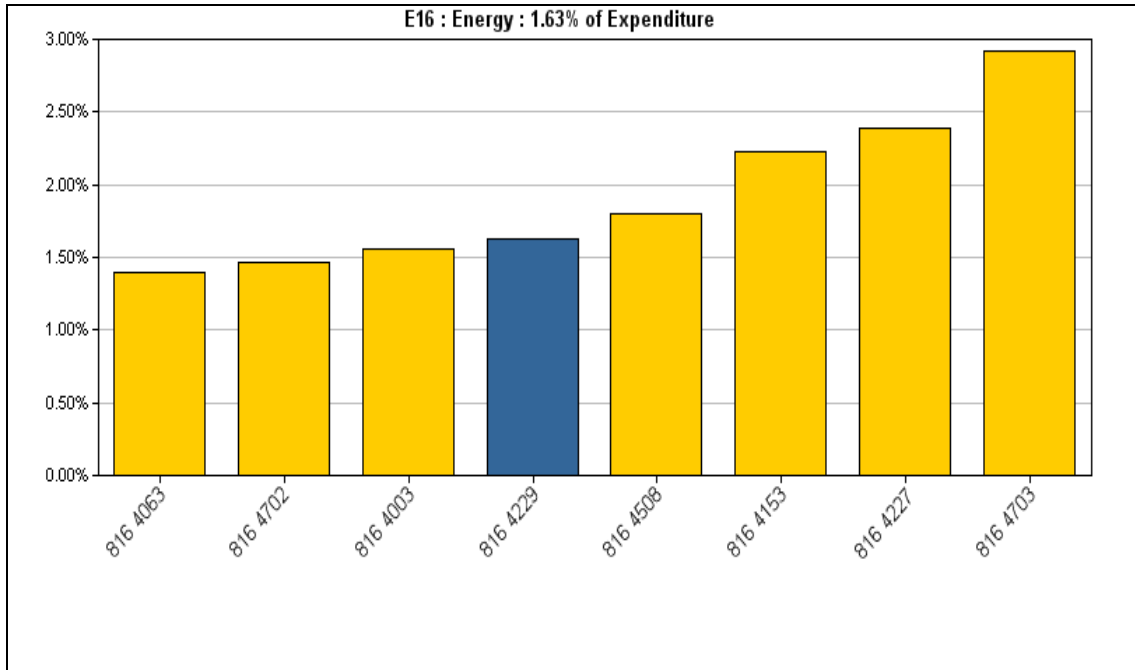


This shows that Admin staff account for 3.39% of total expenditure and that is the lowest amongst the York schools.

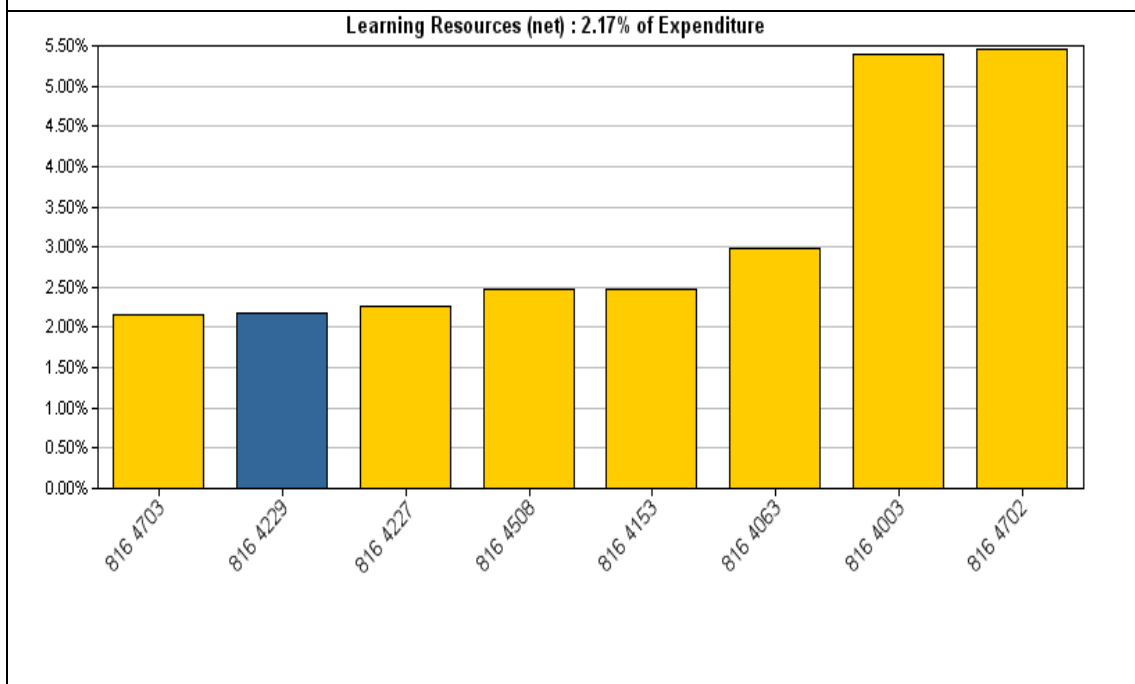


The amount of expenditure on the site staff was 1.53%.

Millthorpe School

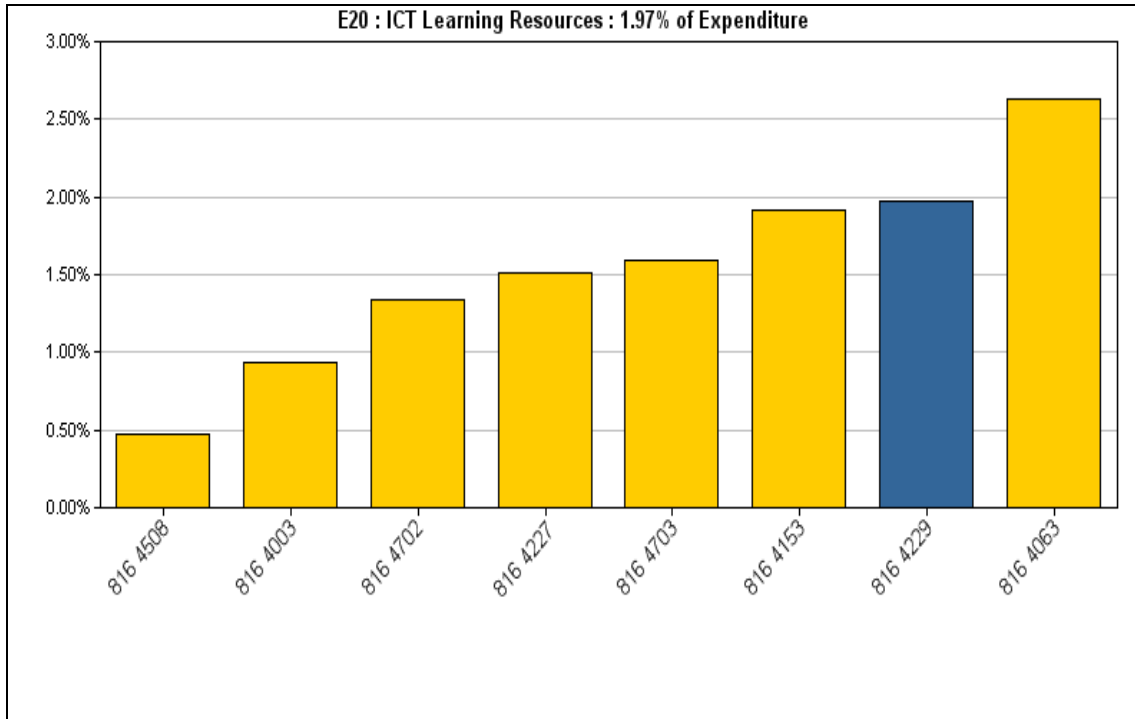


Millthorpe spent 1.63% of the total expenditure on energy costs which, considering the age and condition of the building compares favourably with York High which is a new, more energy efficient building.

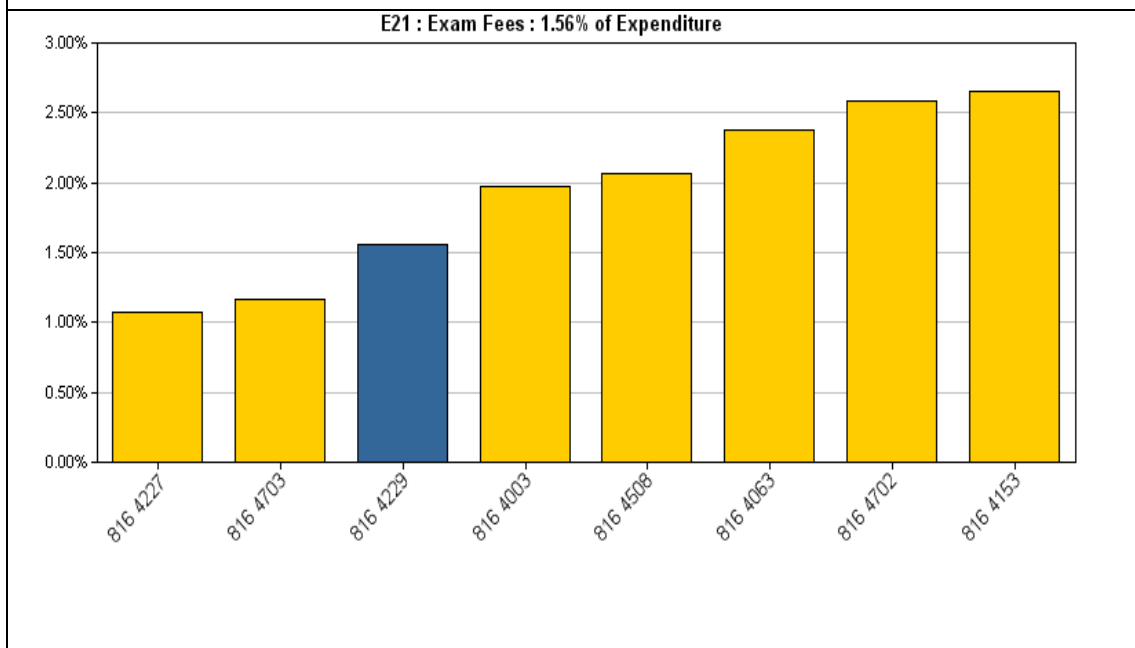


Learning Resources (excluding ICT spend) accounted for 2.17% of total expenditure and is low compared to most other York schools.

Millthorpe School

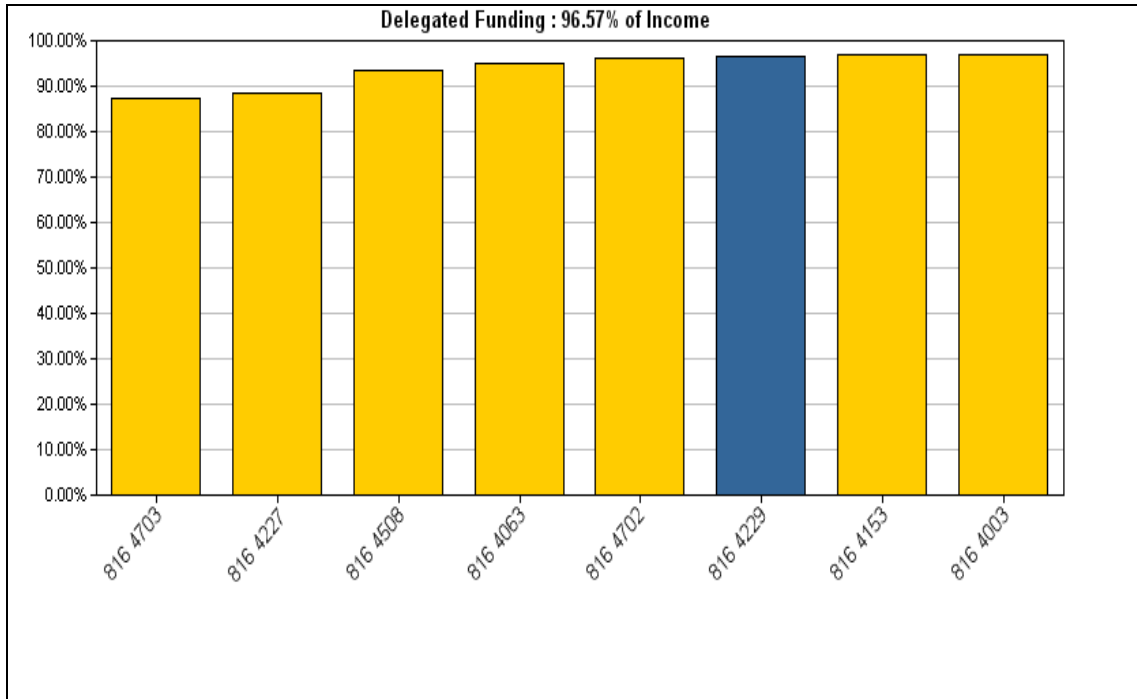


ICT learning resources accounted for 1.97% of expenditure. The second highest amongst York schools.



Millthorpes expenditure on exams accounted for 1.56% of expenditure and was lower than many York schools

Millthorpe School



The funding delegated to us from the Local Authority accounted for 96.57% of the school's total income.