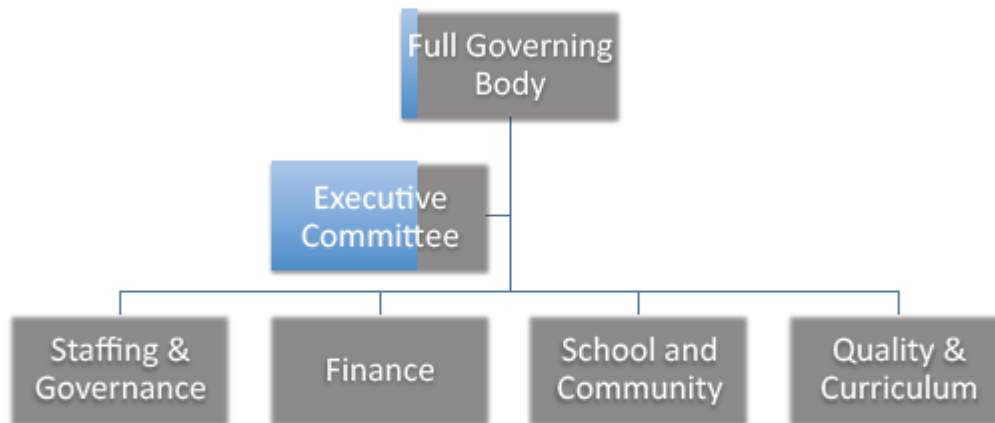
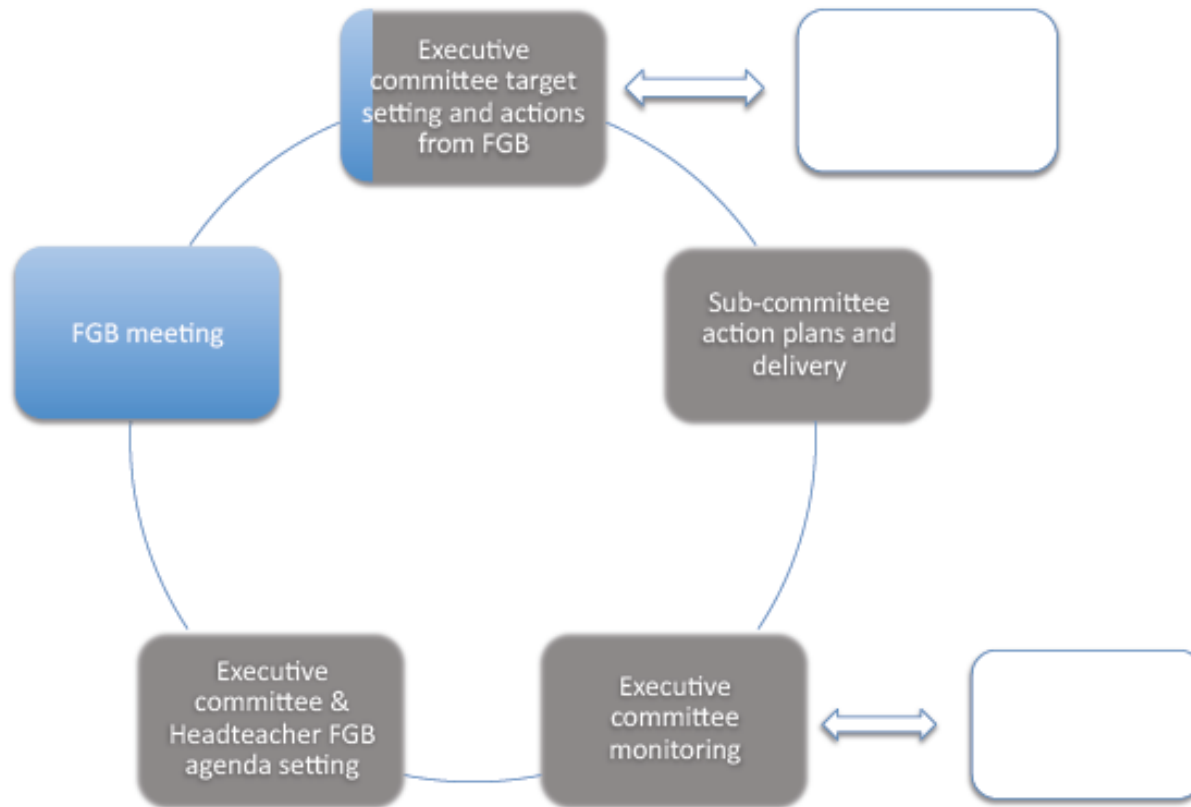


Millthorpe Secondary School, Structure of Governing Body



Cycle of governor engagement



Committee work streams

Executive Committee

- To coordinate the work of committees in line with school improvement priorities
- To discuss emerging issues from committees and prioritise items for discussion at Full Governors
- To respond immediately to critical incidents that require the governor's consideration and direction
- Working with the Senior Leadership Team, provide a framework for discussion of the school's strategic vision with the governing body, staff, students and parents
- To ensure that the governing body is actively involved in setting priorities for improvement and robustly monitoring the impact of improvement plans
- To ensure the skills and expertise of the governing body are effectively matched to the needs of the school and improve the outcomes for students
- To set the agendas for the Full Governing Body meetings

Committee work streams

School and Community

- To investigate sources of funds and grants and to develop opportunities for the school
- To implement the Sustainable Schools agenda
- Monitoring the school Asset Management Plan
- Community liaison
- To coordinate governor involvement in school activities
- Monitor progress against relevant school policies

Staffing and Governance

- Monitoring Governor performance
- Head teacher performance management
- Recruitment and retention
- Monitor progress against relevant school policies

Committee work streams

Quality and Curriculum

- Monitor the School Improvement Plan (SIP) and the Self Evaluation Form
- Review the curriculum
- To provide strategic direction to all quality improvement activities
- To monitor the effectiveness of the school's specialist language status and how this is being used across the curriculum
- Monitor progress against relevant school policies

Finance

- Set and monitor the School Budget in line with the SIP
- To ensure that school improvement and Curriculum needs are adequately financed.
- To monitor cost efficiency of services provided by the Local Authority.
- To reduce the budget deficiency within the time scale determined by the Education Authority.
- Monitor progress against relevant school policies