

## Questions

Choose a topic or part of a topic and think of as many questions as you can about that topic.

Use them to test a friend.

(Make sure that you know the answers!)

Correct the paragraph below by crossing out the wrong option:

When we breathe in (inhale) the intercostals muscles **contract/relax** and pull the ribs **up/down** and **out/in**. The diaphragm moves **up/down**. This **increases/decreases** the volume of the thorax and **increases/decreases** the pressure, drawing air in.

Gas	% inhaled	% exhaled
Oxygen	20	16
Carbon dioxide	0.04	4
Nitrogen	78	78
water	atmospheric	saturated

- What percentage of oxygen do we use up?
- We breathe out 4% of carbon dioxide, where does it come from?
- Where does the additional water in our exhaled breath come from?

Explain why we breathe faster and deeper after exercise:

---



---



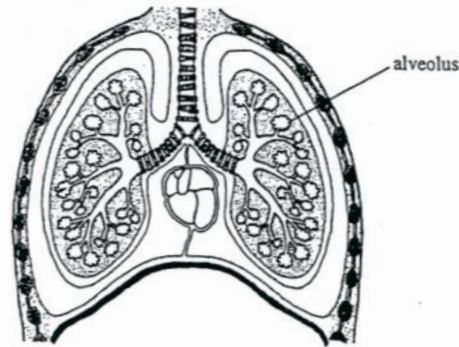
---



---

(5)

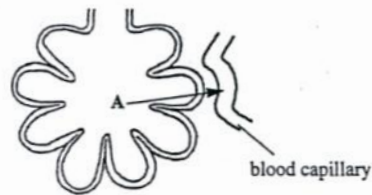
(a) The drawing shows some of the organs in the human thorax.



On the drawing, use guidelines to label:

- the heart;
- a rib;
- the diaphragm;
- the trachea.

(b) The drawing shows a section through an alveolus.



At A, oxygen moves from the air in the alveolus into the blood capillary. Explain, as fully as you can, how oxygen moves into the blood.

---



---



---



---



---



---



---

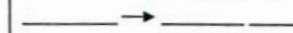


---

Write the equation for aerobic respiration:



Write the equation for anaerobic respiration:



When do our bodies use anaerobic respiration?

Name three diseases caused by smoking:

---



---

If a woman smokes what effect does it have on the birth weight of the baby?

What effect does carbon monoxide have on the ability of the blood to carry oxygen?